

L A K E C O N C O R D T W P. C O U N T Y

LITTLE MOUNTAIN ROAD

265-635 F. Schafer 35.64 Ac.

265-644 L. King 216.64 Ac.

99-256; 212-403 Little Mountain Club 36.16 Ac.

265-635 F. Schafer 12.05 Ac.

265-635 F. Schafer 3.11 Ac.

2.64, 15.97, 15.04 & 10.99 Ac.

167-583 2A A. Thomas

265-642 M. King 99.40 Ac.

L A K E C O U N T Y V I L L . C H I L D S

SEC. ONE

189-134; 196-135 C. Hitchcock 29.53 & 8.04 Ac.

221-127 C. King 23.87 Ac.

SEC. TWO

195-490 to 501; 139-520, 521 Baldwin Geauga Company 40 Ac.

4

187-494 Berkshire Farm Inc. 325.31 Ac.

3

4.67 A. 2.87 A.

143-96 58.28 Ac.

6

159-260 10.15 Ac.

GRISWOLD ROAD

212-595 E. Hitchcock 15.63 Ac.

189-134 10.94 Ac.

196-112 C. Hitchcock et al. 12.98 A.

16.46 & 19.79 Ac.

64.18 Ac.

11.05 Ac.

233-158 M. Hitchcock 2.11 Ac.

0.89 Ac.

207-159 3.11 Ac.

140-593 S.L. Mather 72.80 Ac.

SEC. FOUR

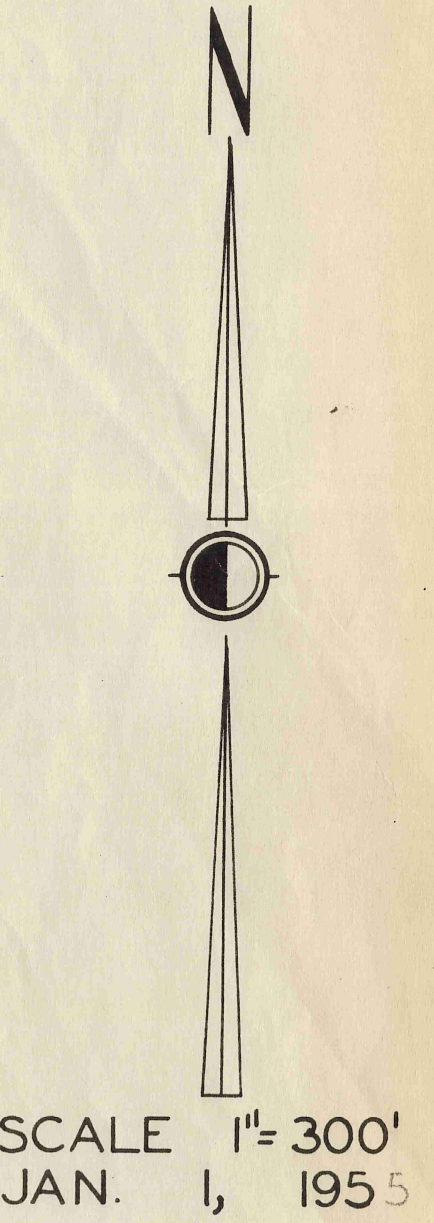
FOUR

SEC. THREE

T R A C T

2

F O U R



CHARDON TWP 'A'

	B	C	D
E	F	G	H
I	J	K	L
M	N	O	P

265-183 F. 806 Jr. 37.72 Ac.

LAKE

GIRDLED RD.

CONCORD TOWNSHIP

COUNTY

167-389 G. Crile 20 Ac.

159-233 6.70 Ac.

220-527 G. Crile Jr. 75.05 Ac.

4

178-362 33.60 Ac.

34.03 Ac.

3

T R A C T

F O U R

SECTION

TWO

152-321 91.35 Ac.

2

GRISWOLD ROAD

143-96 59.28 Ac.

143-359 23.95 Ac.

140-589 59.75 Ac.

1

143-359 13.31 Ac.

HERMITAGE ROAD

T R A C T

O N E

142-286 104.47 Ac.

223-270 A. & D. Copperman 51.71 Ac.

14

199-228 131.16 Ac.

13

CLARK ROAD

ROAD

MAPLE GROVE EST. VOL. 6 PG. 147

140-587 S. Mather 103.16 Ac.

SECTION

THREE

2

165-270, 272 L. Whal et al 34.22 Ac.

154-366 D. Worthington 20 Ac.

218-55 133.06 Ac.

218-313

S. L. Mather 65.90 Ac.

218-192; 229-131 F. T. Fifell 10 Ac.

220-258 J. & D. Fifell 10 Ac.

225-605; 254-213 F. Janacek 12.5 Ac.

243-147 W. & D. Draske 7.5 Ac.

41-349 H. Baker 0.23 Ac.

0.98 Ac.

2

223-289 C. Wicherl 34.03 Ac.

259-438; 260-347

E. E. Schnell 34.03 Ac.

242-595, 596 V. J. Verrick

30.18 Ac.

242-600 E. & D. Dickie 54 Ac.

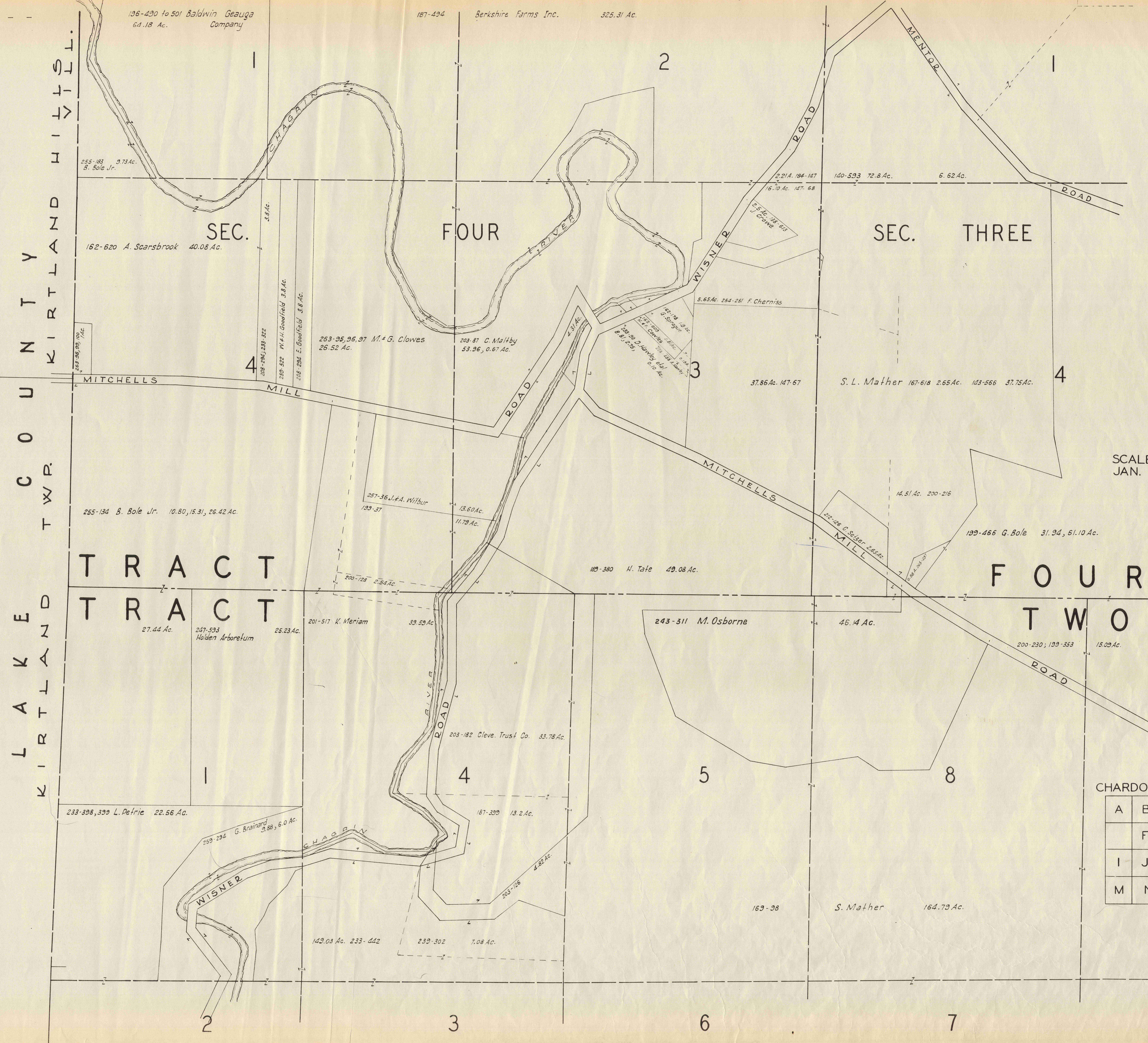
N



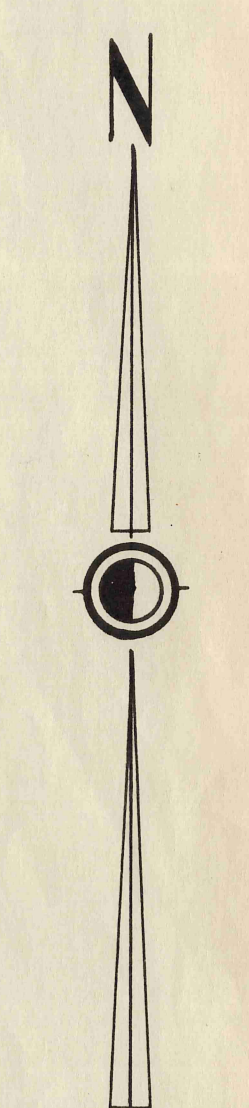
SCALE 1" = 300'
JAN. 1, 1955

CHARDON TWP "B"

A	C	D
E	F	H
I	J	L
M	N	P



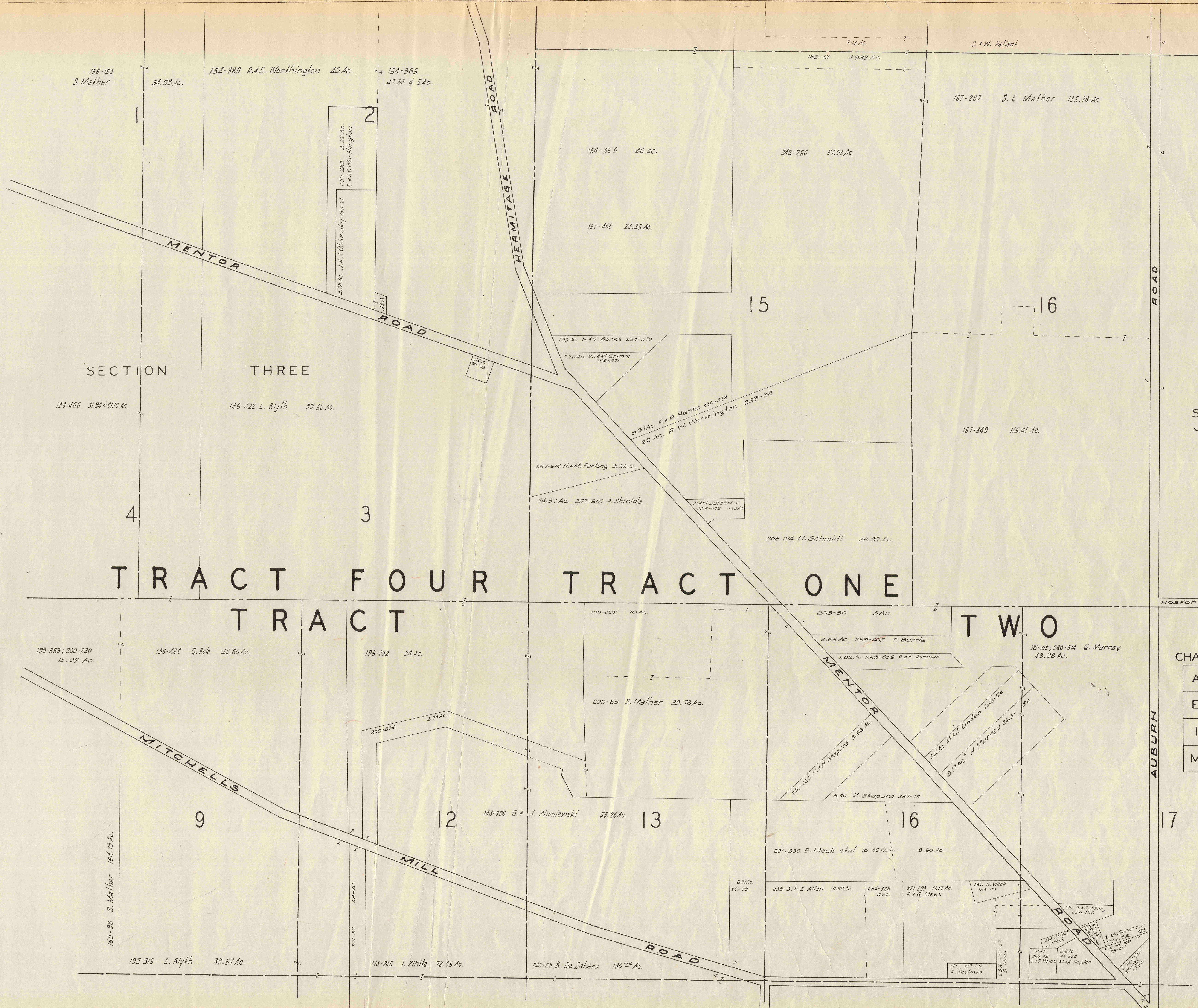
KENTLAND HIGHWAY
 CHARDON TWP.
 KENTLAND TRACT
 KENTLAND TRACT
 KENTLAND TRACT
 KENTLAND TRACT



SCALE 1" = 300'
 JAN. 1, 1955

CHARDON TWP "E"

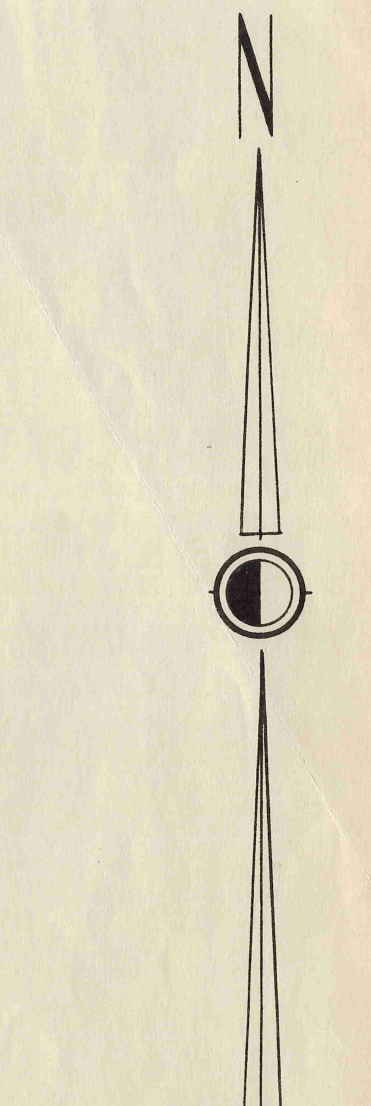
A	B	C	D
	F	G	H
I	J	K	L
M	N	O	P



SECTION THREE

TRACT FOUR TRACT ONE

TRACT TWO

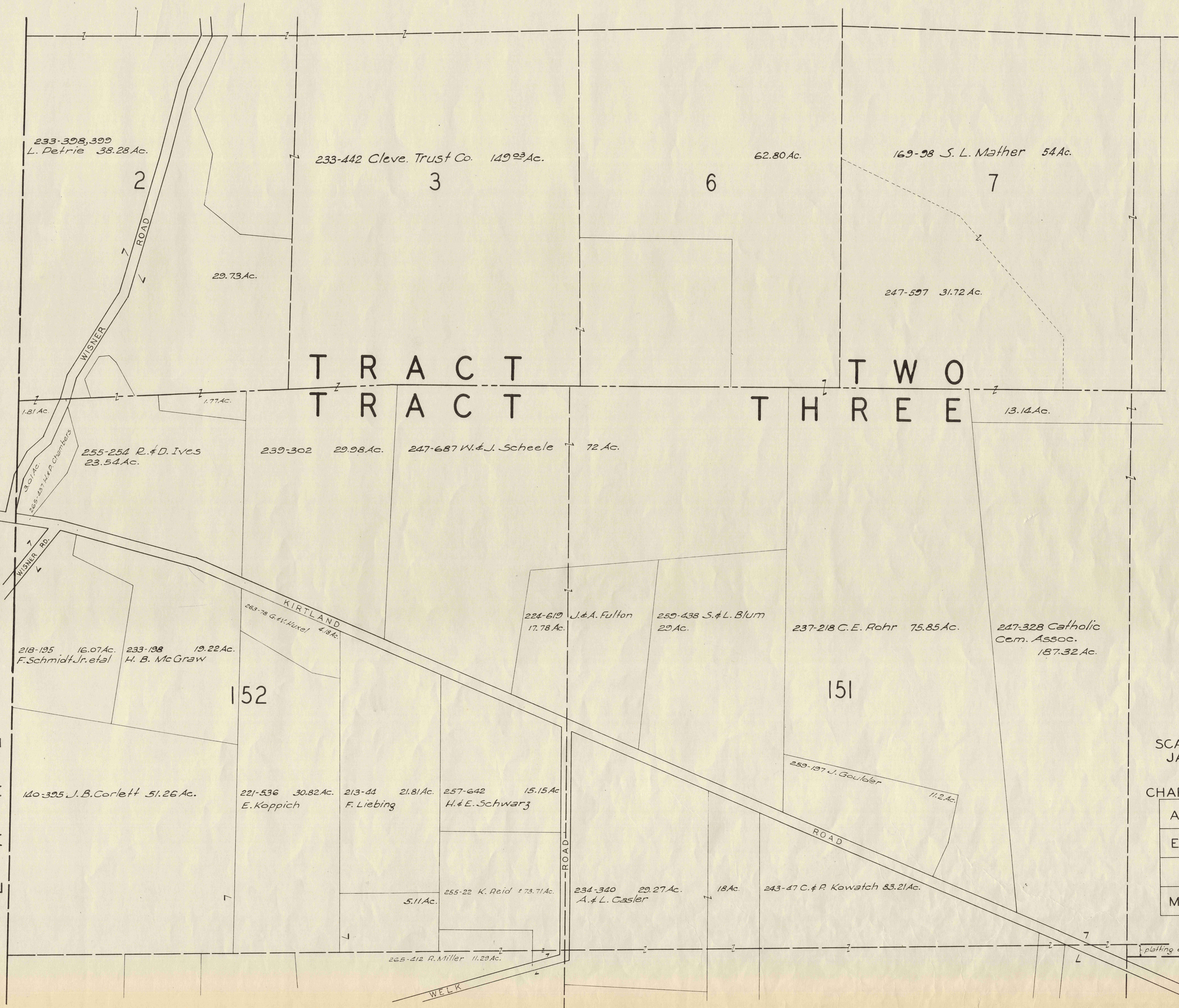


SCALE 1" = 300'
JAN. 1, 1955

CHARDON TWP "F"

A	B	C	D
E		G	H
I	J	K	L
M	N	O	P

C O U N T Y
T O W N S H I P
K I R T L A N D
L A K E



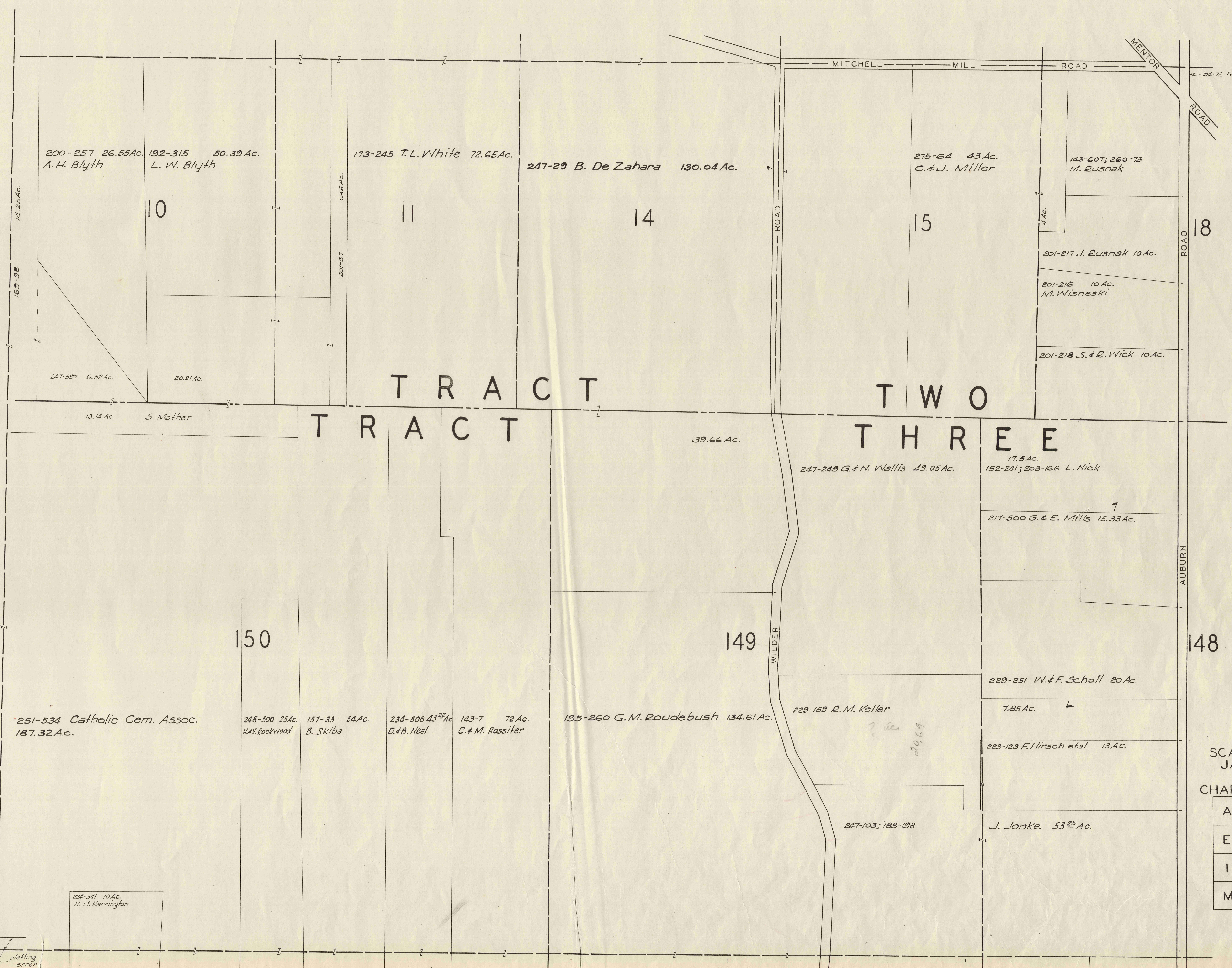
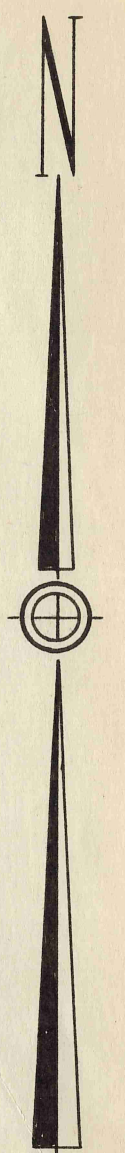
T R A C T T W O
T R A C T T H R E E

SCALE 1" = 300'
JAN. 1, 1955

CHARDON TWP-I-

A	B	C	D
E	F	G	H
	J	K	L
M	N	O	P

plating error



T R A C T

T W O

T R A C T

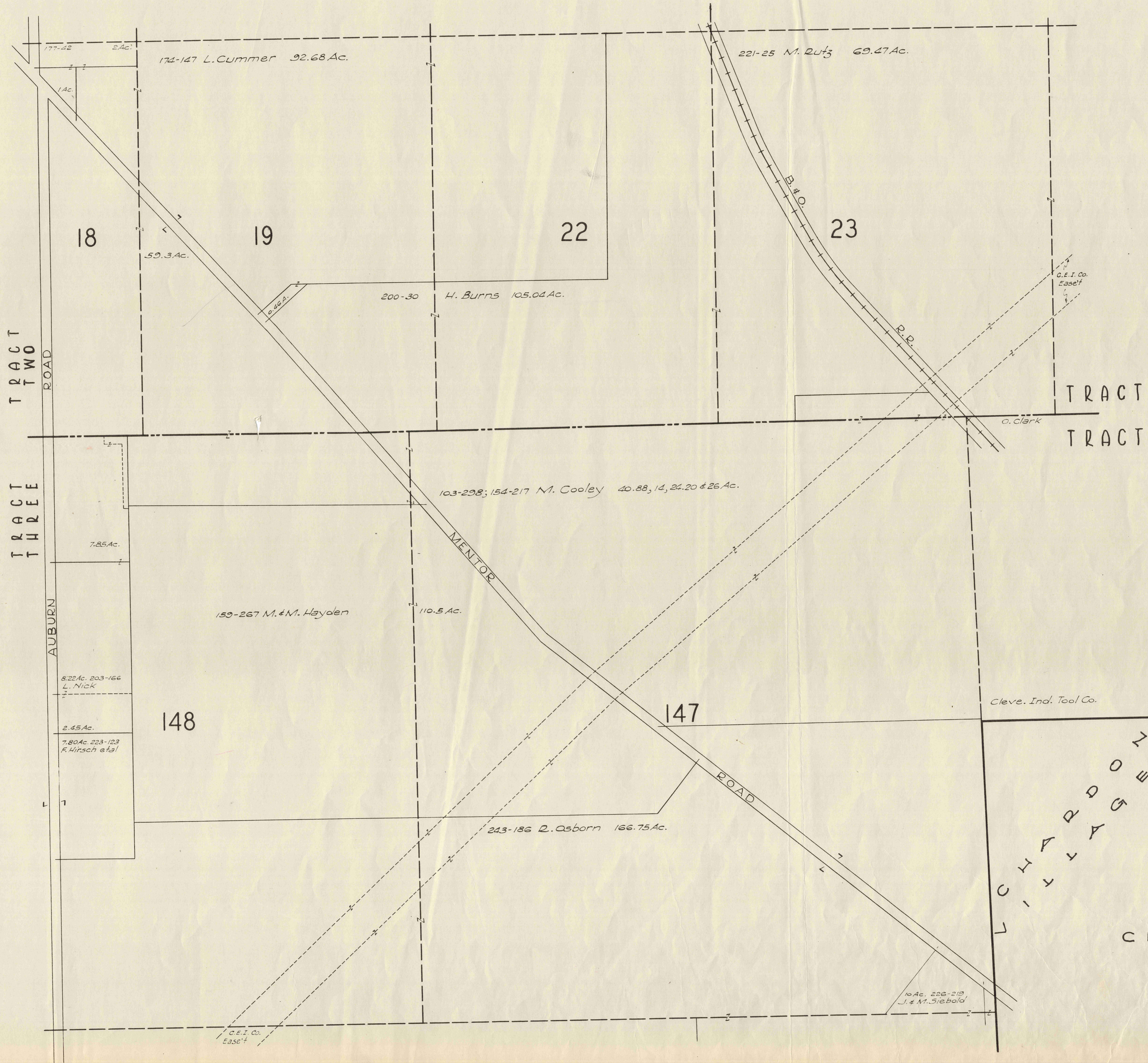
T H R E E

SCALE 1" = 300'
JAN. 1, 1955

CHARDON TWP. - J -

A	B	C	D
E	F	G	H
I		K	L
M	N	O	P

plotting error

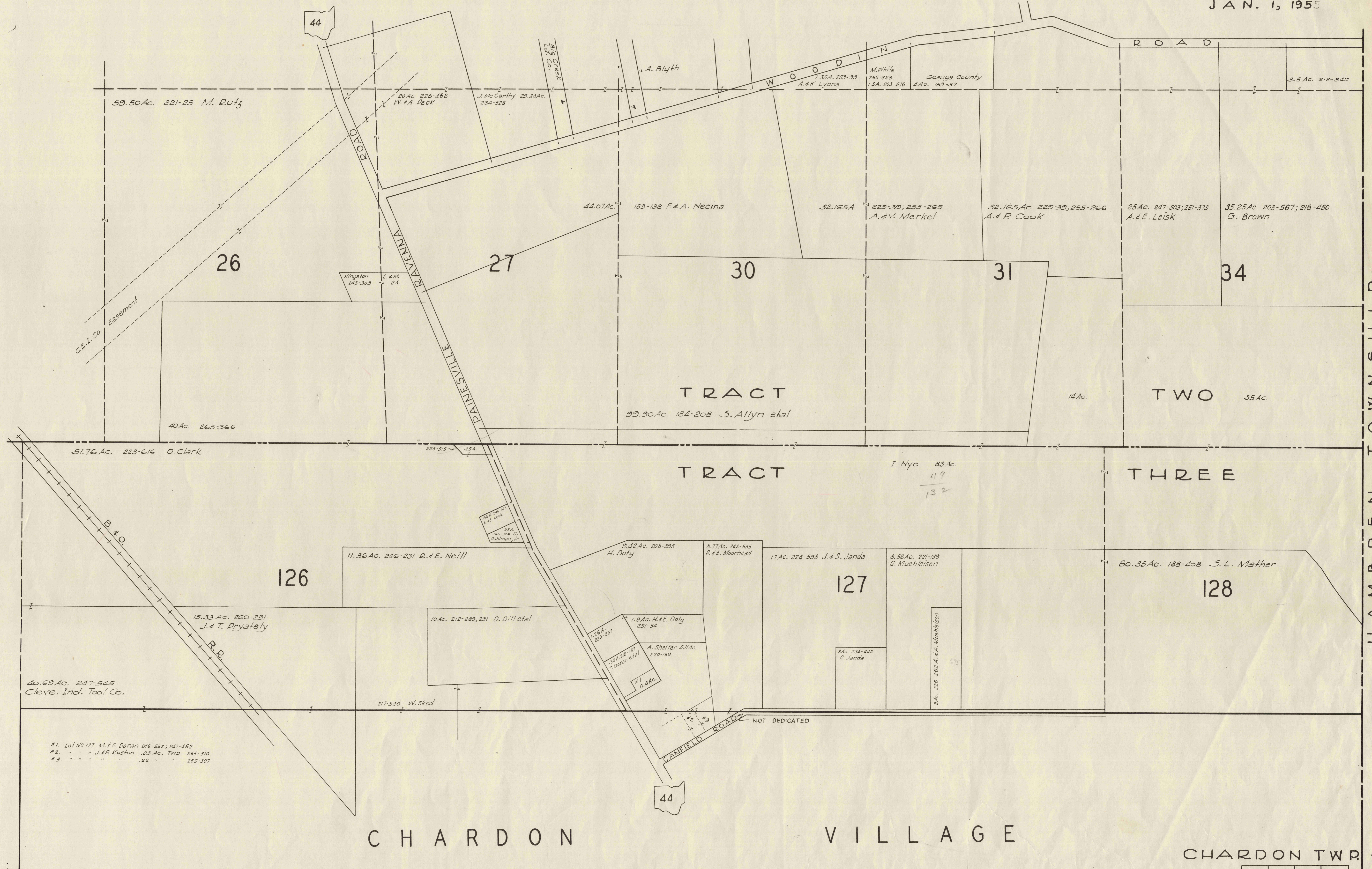


SCALE 1 IN. = 300 FT.
JAN 1, 1955

CHARLDON TWP. - K-

A	B	C	D
E	F	G	H
I	J	K	L
M	N	O	P

SCALE 1 INCH = 300 FEET
 JAN. 1, 1955



HAMBDEN TOWNSHIP

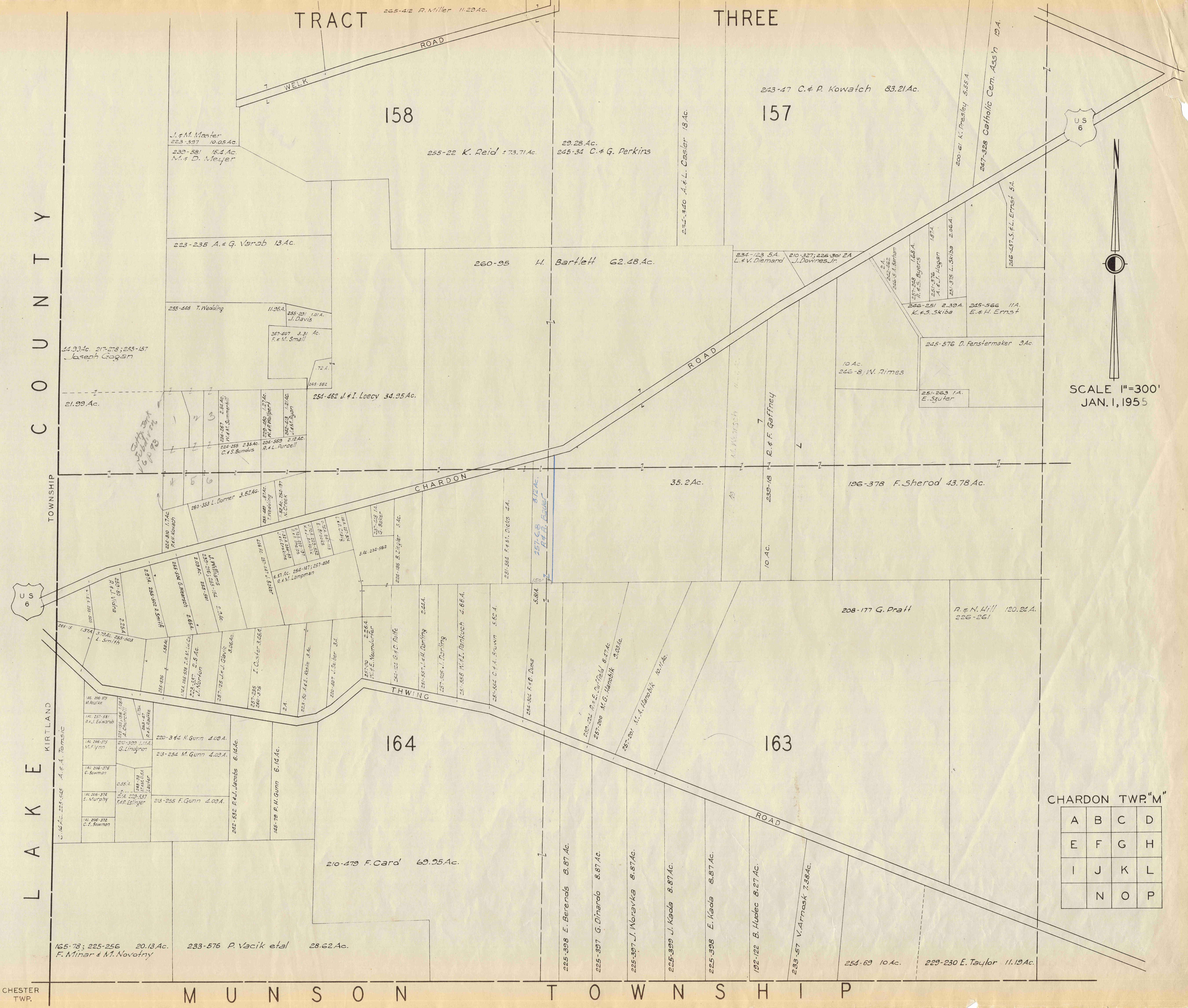
CHARDON

VILLAGE

CHARDON TWP - L-

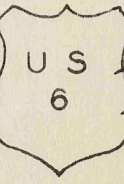
A	B	C	D
E	F	G	H
I	J	K	
M	N	O	P

- #1. Lot No 127 M.F.F. Doran 246-252, 247-262
- #2. " " " J.R. Easton .03 Ac. Twp 265-310
- #3. " " " " .22 " " 265-307



C O U N T Y

TOWNSHIP



L A K E K I R T L A N D

CHESTER TWP.

M U N S O N T O W N S H I P

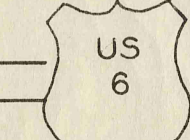
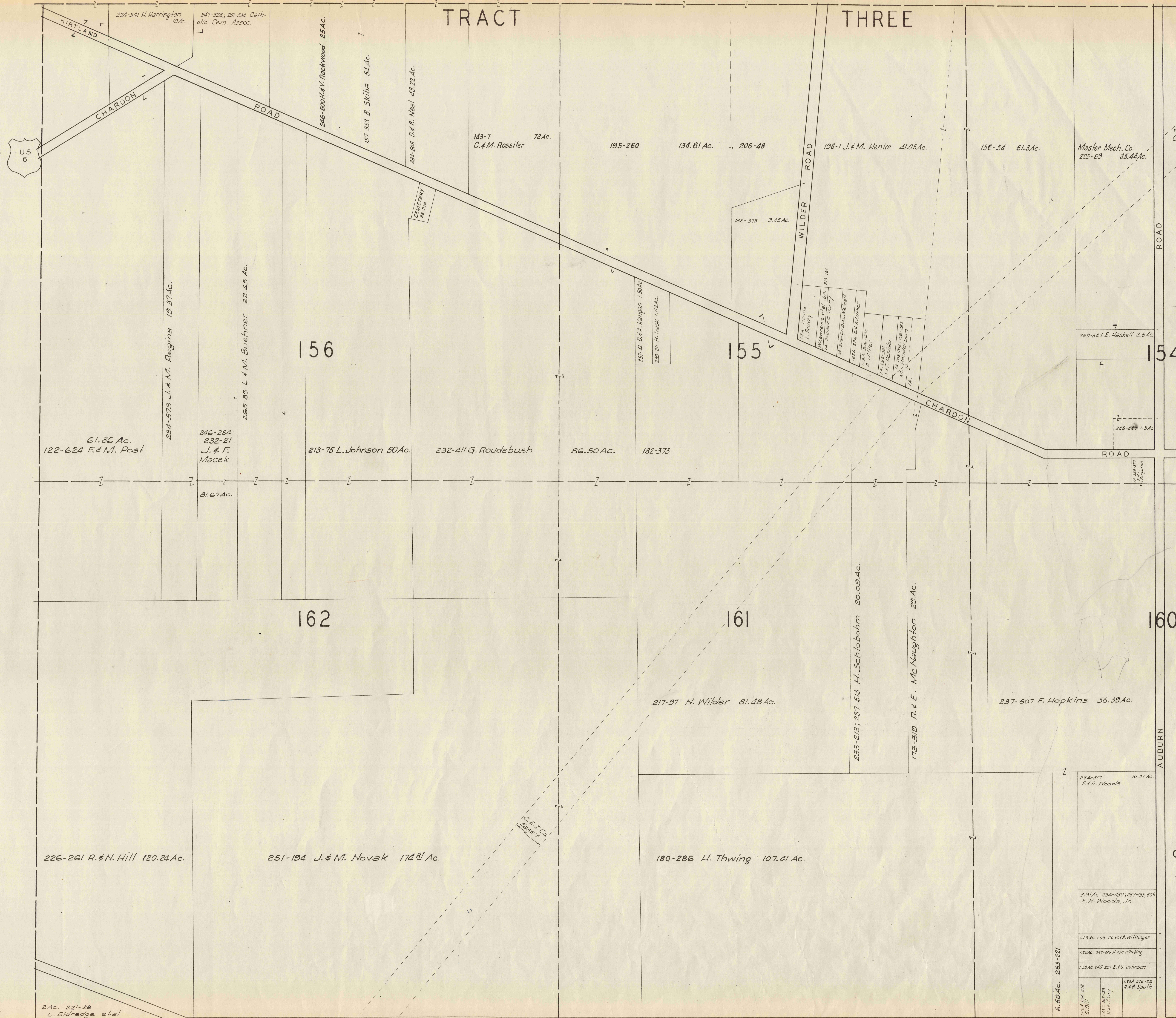
SCALE 1"=300'
JAN. 1, 1955

CHARDON TWP. "M"

A	B	C	D
E	F	G	H
I	J	K	L
N	O	P	

TRACT

THREE

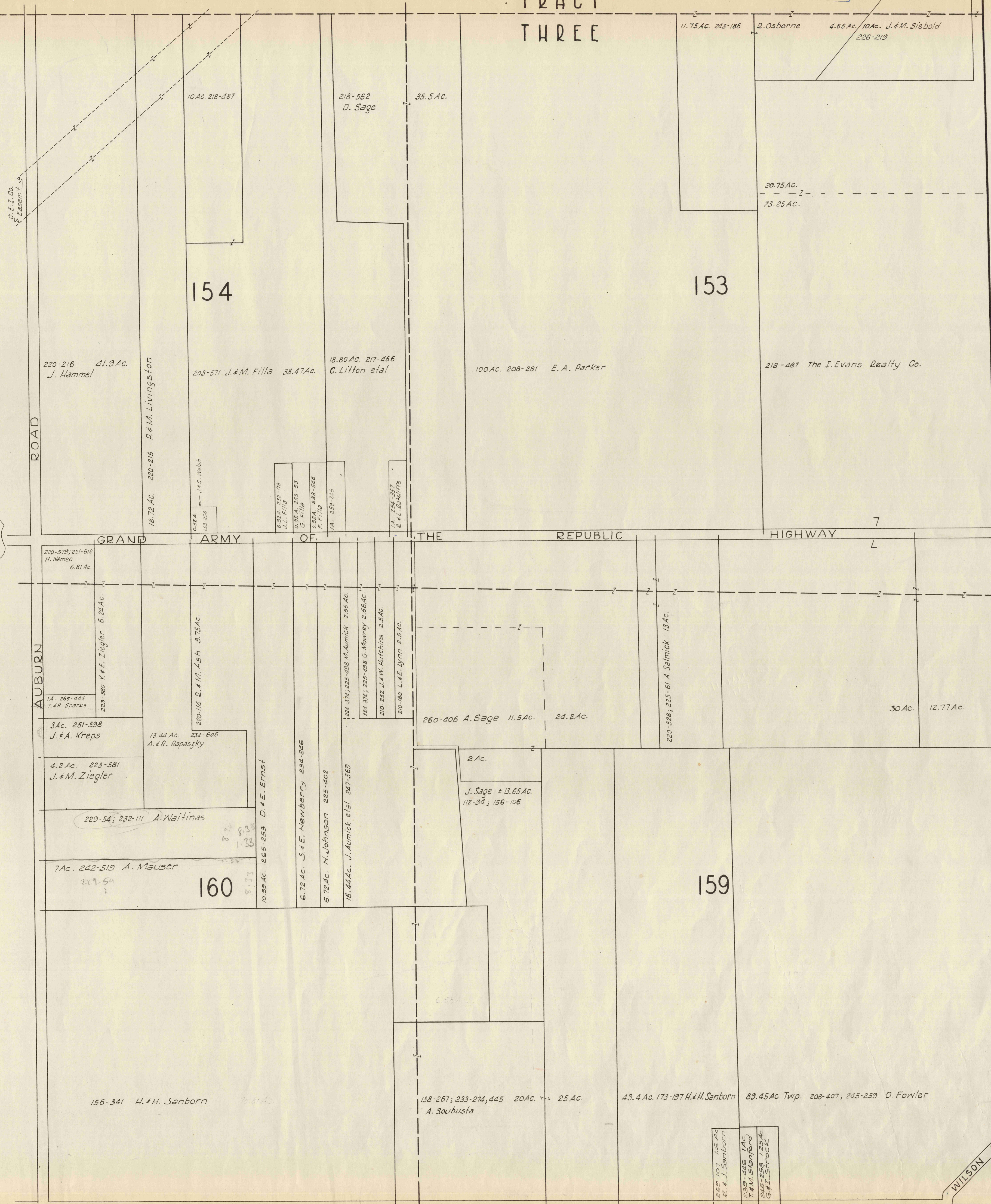


SCALE 1"=300'
JAN. 1, 1955

CHARDON TWP.-N-

A	B	C	D
E	F	G	H
I	J	K	L
M	O	P	

TRACT
THREE



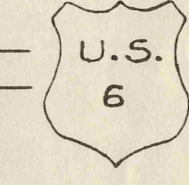
C H A R D O N R O A D



SCALE 1 IN. = 300 FT.
JAN. 1, 1955

CHARDON TWP. -O-

A	B	C	D
E	F	G	H
I	J	K	L
M	N		P



ROAD

AUBURN

THWING MUNSON TOWNSHIP ROAD

WILSON MILLS RD.